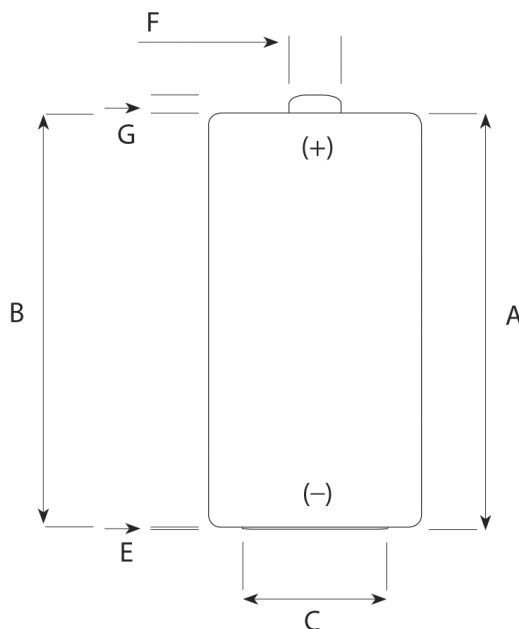
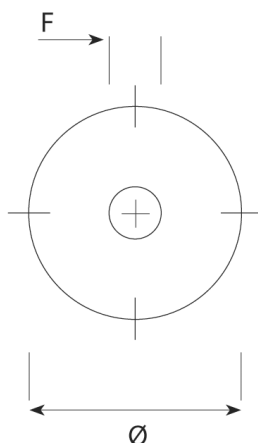


LR14AD POWERLINE

IEC DIMENSIONS (MM)



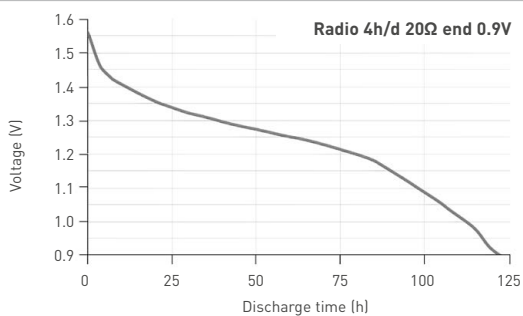
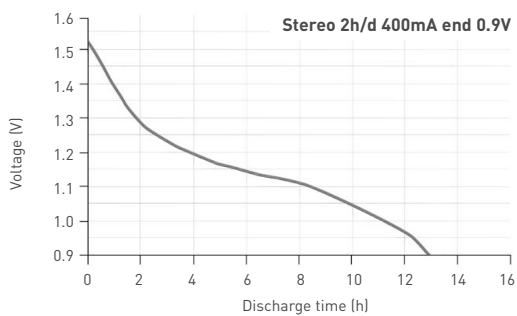
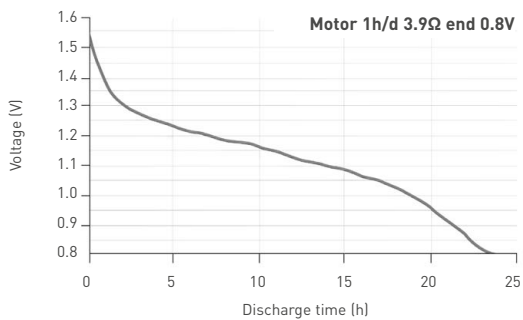
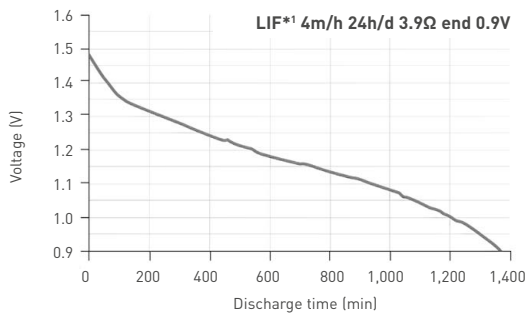
Dimensions	max. (mm)	min. (mm)
A	50.0	
B		48.6
C		13.0
E	0.9	
F	7.5	
G		1.5
Ø	26.2	24.9

SPECIFICATIONS

Name	LR14 / L / C / AM2 / BABY / MN1400 / 14A / 14AC
Made in	Belgium
Type	Alkaline foil
Nominal voltage	1.5V
Electrolyte	Potassium Hydroxide
Average weight	69.5g
Storage temperature range	+10°C ~ +25°C
Operating temperature range	-20°C ~ +45°C
Average impedance	approx. 100mΩ @ 1kHz AC
Heavy metals	No added mercury (Hg), Cadmium (Cd) or Lead (Pb)
Compliant with	IEC 60086 non dangerous goods regulation Nordic Ecolabel (White Swan) version 3.7 EC directive 91/157EC, 98/101EC, 2006/66/EC
Recommended cut-off voltage	0.8V per cell

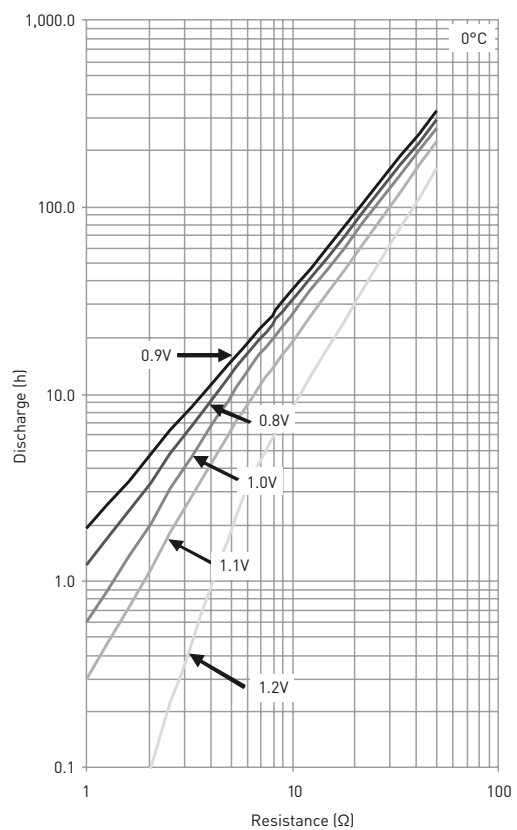
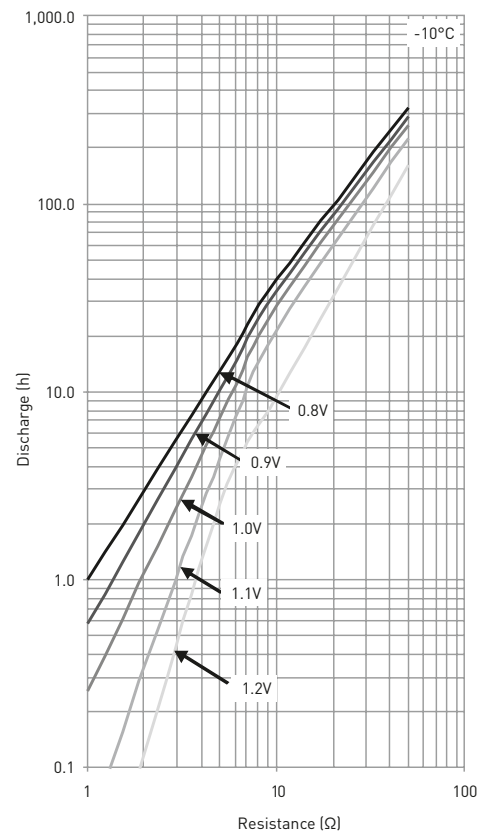
## LR14AD POWERLINE

## TYPICAL DISCHARGE VALUES



\*1 Light intention flashlight

## DISCHARGE TEMPERATURE CHARACTERISTICS



## LR14AD POWERLINE

### DISCHARGE TEMPERATURE CHARACTERISTICS

