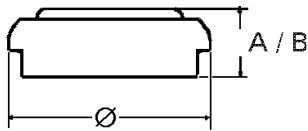


Data Sheet

Type Number 4626
Designation IEC LR 9
System Manganese Dioxide /
 Zinc / KOH - Electrolyte



Nominal Voltage 1,5 V
Typical Capacity C 200 mAh
 Load 300 Ohm, at 20°C down to 0.9 V

Weight (approx.) 2,9 g
Volume 1,01 ccm
Coding..... Date of Manufacturing
 Month/Year

Temperature Ranges

	min	max.
Storage	-10°C	65 °C
Discharge	-10°C	65°C

Dimensions

	min	max.
Diameter (Ø).....	15,20	16,00
Height (A/B)	5,6	6,20

Segment Photo

Main Applications Photo
 Electronic

Typical Capacities (at 20°C)

Discharge Type	Load	End Voltage: 0.9 V
Continuous 24h/d,7d/w Current [µA]:	300 Ω 5000	Time: 48 h Capacity [mAh]: 200 Energy [mWh]: 250
Close Circuit Voltage (CCV)		≥ 1,2 V Load resistor 25 ohm for 2 seconds