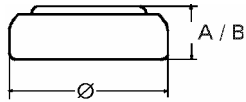


Data Sheet

Type Number 20377
Designation IEC SR66
System Silver oxide / Zinc /
 NaOH - Electrolyte



Nominal Voltage 1,55 V
Typical Capacity C 24 mAh
 Load 20 kOhm, at 20°C down to 1.2 V

Weight (approx.) 0,39 g
Volume 0,09 ccm
Coding..... Date of Manufacturing
 Month/Year

Temperature Ranges
 Storage min max.
 -10°C 65°C
 Discharge -10°C 65°C

Dimensions
 Diameter (Ø)..... min max.
 6,7 6,8
 Height (A/B) 2,4 2,6

Segment Watch

Main Applications Watch
 Photo
 Electronic

Typical Capacities (at 20°C)

Discharge Type	Load	End Voltage:	1.2 V
Continuous	20000 Ω	Time:	306 h
24h/d,7d/w		Capacity [mAh]:	24
Current [µA]:	78	Energy [mWh]:	37