

Specifications

Nominal Voltage		12 V
Capacity (25°C)	8HR(10.8V)	150 Ah
	3HR(10.5V)	120 Ah
	1HR(9.60V)	99.6 Ah
Dimension	Length	551 ± 3mm (21.69inch)
	Width	110 ± 2mm (4.33inch)
	Height	287 ± 2mm (11.30inch)
	Total Height	287 ± 2mm (11.30inch)
Approx. Weight		50kg (110lbs) ± 3%
Terminal type		T11
Internal resistance (Fully charged, 25°C)		Approx. 4mΩ
Capacity affected by temperature (10HR)	40°C	102%
	25°C	100%
	0°C	85%
	-15°C	65%
Self-discharge (25°C)	3 month	Remaining Capacity: 91%
	6 month	Remaining Capacity: 82%
	12 month	Remaining Capacity: 65%
Nominal operating temperature		25°C ± 3°C (77°F ± 5°F)
Operating temperature range	Discharge	-40°C ~ 50°C (-40°F ~ 122°F)
	Charge	-20°C ~ 50°C (-4°F ~ 122°F)
	Storage	-20°C ~ 50°C (-4°F ~ 122°F)
Float charging voltage(25°C)		13.50 to 13.80V Temperature compensation: -18mV/°C
Cyclic charging voltage(25°C)		14.50 to 14.90V Temperature compensation: -30mV/°C
Maximum charging current		45A
Terminal material		Copper
Maximum discharge current		1200A(5 sec.)
Designed floating life(20°C)		15 years

- ◆ Absorbent glass mat technology;
- ◆ Recognized by UL & CE;
- ◆ ABS container.
- ◆ 15 Years long life designed floating life .

Constant Current Discharge Characteristics (A, 25°C)

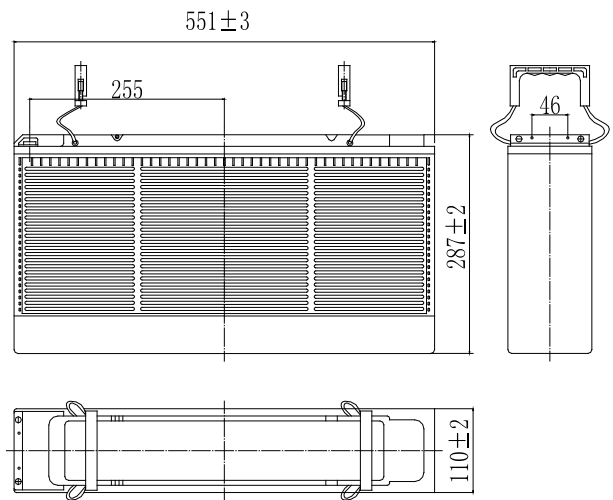
F.V/TIME	15min	30min	60min	2h	3h	4h	5h	6h	8h	10h	20h
1.60v/cell	260	158	99.6	58.7	41.0	33.6	28.7	25.1	19.7	16.4	8.6
1.65v/cell	254	154	98.1	58.4	40.7	33.4	28.5	25.0	19.6	16.3	8.6
1.70v/cell	244	150	95.7	57.9	40.5	33.2	28.3	24.8	19.4	16.3	8.6
1.75v/cell	236	146	93.8	57.0	40.2	33.0	28.2	24.6	19.3	16.2	8.5
1.80v/cell	224	140	90.9	55.5	39.0	31.9	27.3	23.9	18.8	16.1	8.4

Constant Power Discharge Characteristics (Watt, 25°C)

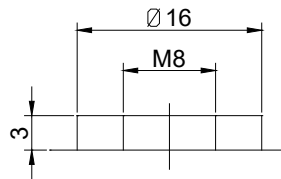
F.V/TIME	15min	30min	60min	2h	3h	4h	5h	6h	8h	10h	20h
1.60v/cell	476	295	190	114	80.4	65.9	56.5	49.5	38.9	32.5	17.1
1.65v/cell	464	288	186	113	79.8	65.6	56.3	49.1	38.8	32.5	17.1
1.70v/cell	447	280	182	111	79.3	65.0	55.7	48.8	38.4	32.4	17.1
1.75v/cell	432	273	178	110	78.8	64.6	55.4	48.4	38.3	32.1	17.0
1.80v/cell	409	264	173	107	76.4	62.7	53.8	46.9	37.0	31.9	16.9

Note: The above characteristics data can be obtained within three charge/discharge cycles. Page 1 of 2

Dimensions

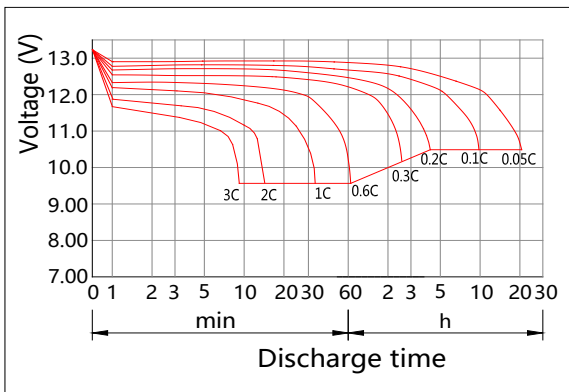


Terminal

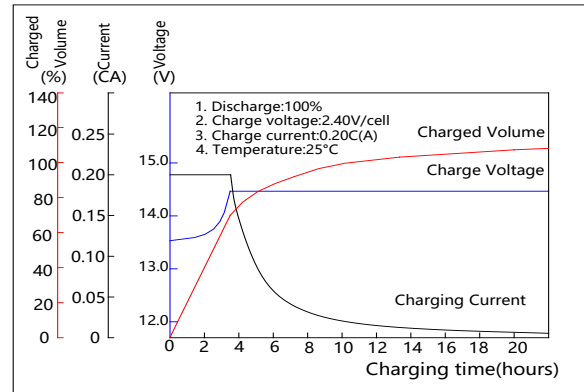


Terminal T11

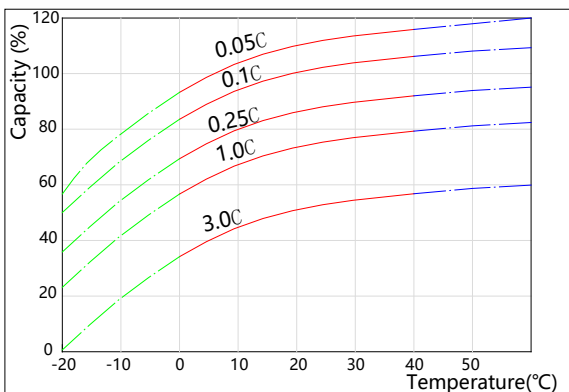
Discharge Characteristics(25°C)



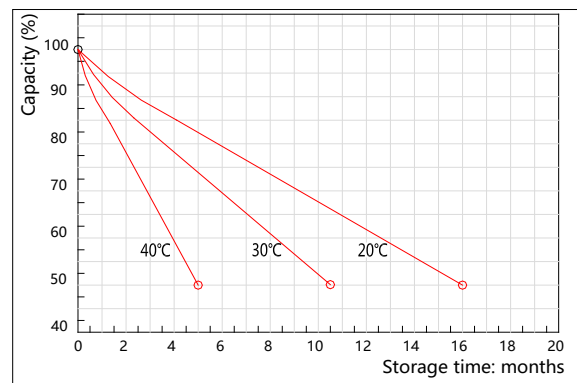
Charging Characteristics(25°C)



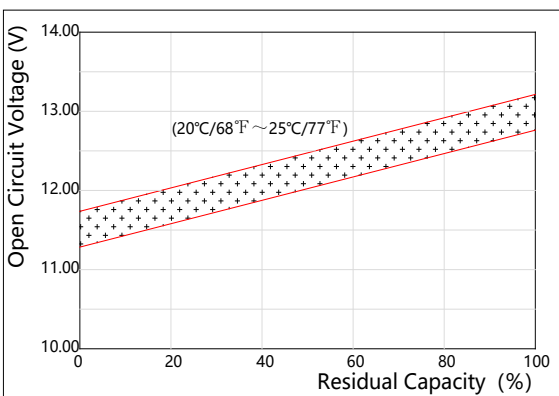
Effect of Temperature on Capacity



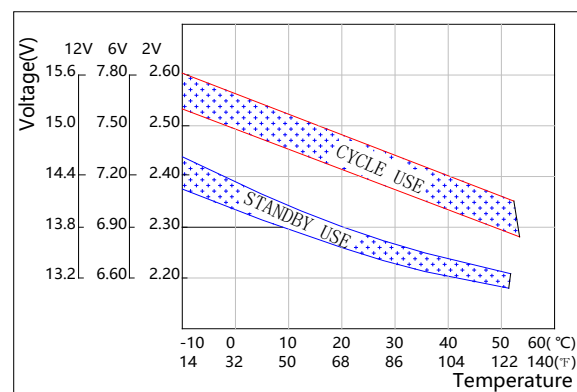
Self-discharge Characteristics



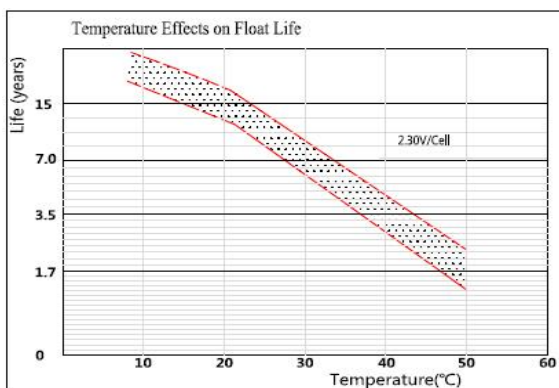
The Relationship for Open Circuit Voltage and Residual Capacity (25°C)



The Relationship for Charging Voltage and Temperature



Floating Life on Temperature



Cycle Life on D.O.D.(25°C)

